



ASHRAE LOUISVILLE CHAPTER NEWS

American Society of Heating, Refrigeration and Air Conditioning Engineers
Serving the commonwealth for 45 years.

PRESIDENT

Joseph Nitzken, P.E.
AAF International
Ph: 502-637-0179
Fax: 502-637-0676
jnitzken@aafintl.com

PRESIDENT ELECT

Luke Powell
Air Equipment Company
Ph: 502-587-7349
Fax: 502-587-7340
luke@airequipmentcompany.com

VICE PRESIDENT

Ray Beaufait, P.E.
BCCLT, Inc.
Ph: 502-633-1506
Fax: 502-633-2222
Beaufait@bcclt.com

SECRETARY

Matt Hargan, P.E.
Hargan Engineering
Ph: 502-452-2078
Fax: 502-452-2078
mhargan@aol.com

TREASURER

Julian Donahue, P.E.
Louisville Water Company
Ph: 502-569-3600, ext. 2422
Fax: 502-596-0835
idonahue@lwcky.com

MEMBERSHIP

Tom Weber
Louisville Medical Center, Inc.
Ph: 502-584-4613
Fax: 502-584-4003
tomlmc@bellsouth.net

RESEARCH

Edward A. Dusch, P.E.
Louisville Medical Center, Inc.
Ph: 502-584-6289
Fax: 502-584-4003
edlmc@bellsouth.net

CTTC & PROGRAMS

Jeff Murphy, P.E.
Koch Air, LLC
Ph: 502-491-9970
Fax: 502-491-0226
jmurphy@kochair.com

HISTORIAN

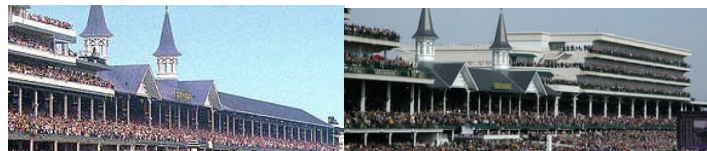
Open

Facility Tour: Churchill Downs

Monday, November 5, 2007 - Lunch Meeting

ABSTRACT:

The face of the worlds most legendary race track was forever changed during the recent three year – two phase renovation project. The total construction value was \$127 million with 750,000 square feet of new and renovated spaces. Phase II, the area we will tour, includes a 2,000 ton chiller plant with a vari-prime distribution system, Tower Tech cooling towers and a field erected 350,000 cfm air handling unit.



Prior to Renovation

After Renovation

TOUR GUIDES:

Tony Zabloudil is the Senior Project Manager at Lockett & Farley Architects and Engineers and was the engineer of record for the Churchill Downs renovation project.

Bob Vogt is the Senior Mechanical Designer at Lockett & Farley Architects and Engineers and performed the majority of the design and drafting work on the project.

Earl Baker is a Mechanical Designer/Estimator/Project Manager at Hussung Mechanical Contractors and was the on-site project manager for the renovation project.

MEETING LOCATION:

Churchill Downs Race Track – The Derby Room
Lunch will start at 11:30am with tour to follow

The cost for attending is \$20.00, cash or check (made payable to ASHRAE). We want to encourage attendance, but emphasize the importance of notifying the treasurer if plans to attend have changed. Your consideration will help avoid meeting fee increases to offset losses associated with extra meal preparation.

It is extremely important to make your reservation no later than Wednesday, October 31st with Julian Donahue by simply using one of the following three options: 1) Calling (502) 569-3600 x 2422 2) E-mail jdonahue@lwcky.com.

NOTE: The Technical Sessions DVD from the Chapter Regional Conference will be available for viewing after the tour for up to 7 PDHs, if enough parties are interested. Those who are interested, please respond via email to Julian Donahue (see above) no later than Wednesday, October 31.

NEWSLETTER EDITOR

Hope Evans
Harshaw Trane
Ph: 502-753-7790
Fax: 502-499-7870
Hope.Evans@trane.com

STUDENT ACTIVITIES

Tim Robertson
Johnson Controls Inc.
Ph: 502-671-7338
Fax: 502-671-7386
Timothy.S.Robertson@jci.com

Tom Nicolas

Ameresco
Ph: 502-420-1999
Fax: 502-420-1988
tnicolas@ameresco.com

BOARD OF GOVERNORS

Ray Beaufait, P.E.
BCCLT, Inc.
Ph: 502-633-1506
Fax: 502-633-2222
Beaufait@bcclt.com

Chip Summers, P.E.

Air Equipment Company
Ph: 502-587-7349
Fax: 502-587-7340
chip@airequipmentcompany.com

HONORS & AWARDS

Matt Hargan, P.E.
Hargan Engineering
Ph: 502-452-2078
Fax: 502-452-2078
mhargan@aol.com

CRC DELEGATE

Joseph Nitzken, P.E.
AAF International
Ph: 502-637-0179
Fax: 502-637-0676
jnitzken@aafintl.com

CRC ALTERNATE

Luke Powell
Air Equipment Company
Ph: 502-587-7349
Fax: 502-587-7340
luke@airequipmentcompany.com

CHAPTER WEBMASTER

Ray Beaufait, P.E.
BCCLT, Inc.
Ph: 502-633-1506
Fax: 502-633-2222
Beaufait@bcclt.com

VISIT THE LOUISVILLE CHAPTER ON THE WEB!

<http://www.ashraeregion7.org/louisville/index.html>